

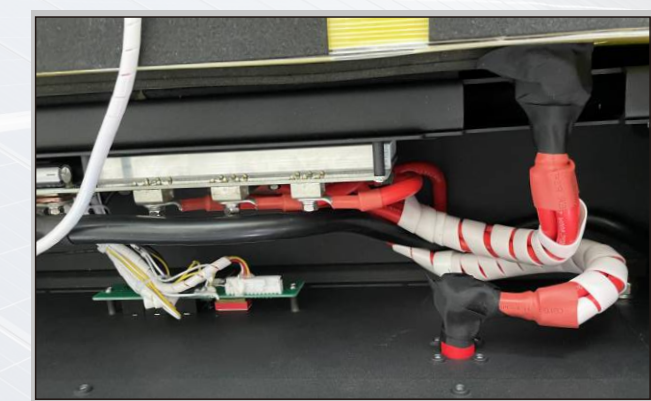
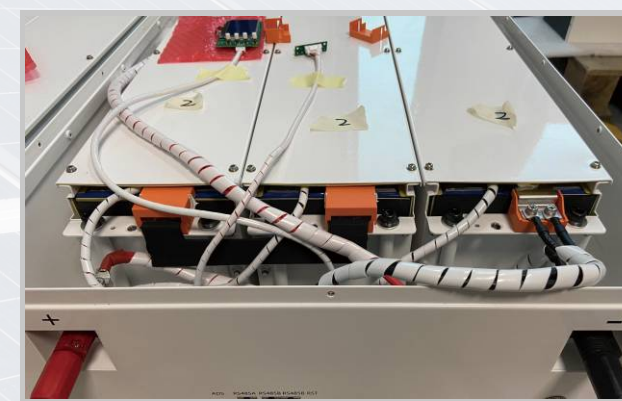


SHENZHEN LITU NEW ENERGY TECHNOLOGY CO.,LTD



## PRODUCT SPECIFICATIONS

Battery Specifications			
Model No	YP48100-4.8KWH V2 YP51100-5.12KWH V2	YP48150-7.2KWH V2 YP51150-7.68KWH V2	YP48200-9.6KWH V2 YP51200-10.24KWH V2
Nominal Parameters			
Voltage	48 V/51.2V	48 V/51.2V	48 V/51.2 V
Capacity	100 Ah	150 Ah	200Ah
Energy	4.8 /5.12 Kwh	7.2/7.68 Kwh	9.6 /10.24 Kwh
Dimensions (L x W x H)	740*530*200mm	740*530*200mm	740*530*200mm
Weight	66/70kg	83/90 kg	101/110 kg
Basic Parameters			
Life time(25°C)	10 Years		
Life cycles(80% DOD, 25°C)	6000 Cycles		
Storage time & temperature	5 months @ 25°C; 3 months @ 35°C; 1 month @ 45°C		
Lithium Battery Standard	UL1642(Cell), IEC62619.UN38.3, MSDS ,CE,EMC		
Enclosure protection rating	IP21		
Electrical Parameters			
Operation voltage	48 Vdc		
Max. charging voltage	54 Vdc		
Cut-off Discharge Voltage	42 Vdc		
Max. charging and discharging current	100A(4800W)	120A(5760W)	120A(5760W)
Compatibility	Compatible with all standard offgrid inverters and charge controllers. Battery to inverter output sizing keep 2:1 ratio.		
Warranty Period	5-10 Years		
Remarks	Youth Power wall battery BMS must be wired in parallel only. Wiring in series will void the warranty.		
Finger Touch Version	Available only for 51.2V 200AH, 200A BMS		



[www.youth-power.net](http://www.youth-power.net)

Email : [sales@youth-power.net](mailto:sales@youth-power.net)