

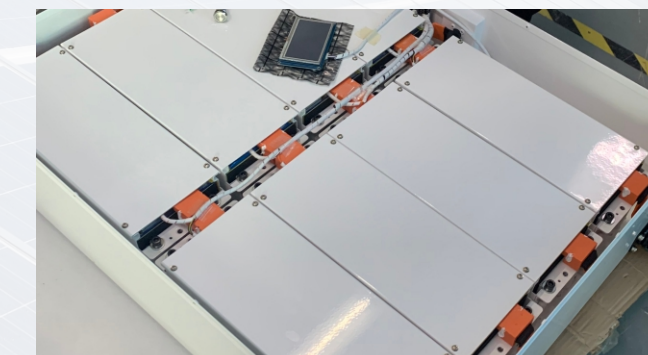


SHENZHEN LITU NEW ENERGY TECHNOLOGY CO.,LTD



PRODUCT SPECIFICATIONS

| Battery Specifications | |
|---------------------------------------|--|
| Model No | YP51400 20KWH |
| Nominal Parameters | |
| Voltage | 51.2V |
| Material | Lifepo4 |
| Capacity | 400Ah |
| Energy | 20.48Kwh |
| Dimensions (L x W x H) | 600x846x293 mm |
| Weight | 205KG |
| Basic Parameters | |
| Life time(25° C) | Expected Life time |
| Life cycles(80% DOD, 25° C) | 6000 Cycles |
| Storage time / temperature | 5 months @ 25° C; 3 months @ 35° C; 1 month @ 45° C |
| Operation temperature | - 20° C to 60° C @60+/-25% Relative Humidity |
| Storage temperature | 0° C to 45° C @60+/-25% Relative Humidity |
| Lithium Battery Standard | UL1642(Cell), IEC62619, UN38.3, MSDS, CE-EMC |
| Enclosure protection rating | IP21 |
| Electrical Parameters | |
| Operation voltage | 51.2 Vdc |
| Max. charging voltage | 58 Vdc |
| Cut-off-Discharge Voltage | 46 Vdc |
| Max, charging and discharging current | 100A Max. Charge and 200A Max. Discharge |
| Compatibility | Compatible with all standard off grid inverters and charge controllers. Battery to inverter output sizing keep 2:1 ratio. |
| Warranty Period | warranty 5-10 years |
| Remarks | Youth Power battery BMS must be wired in parallel only. Wiring in series will void the warranty. |



www.youth-power.net

Email : sales@youth-power.net